

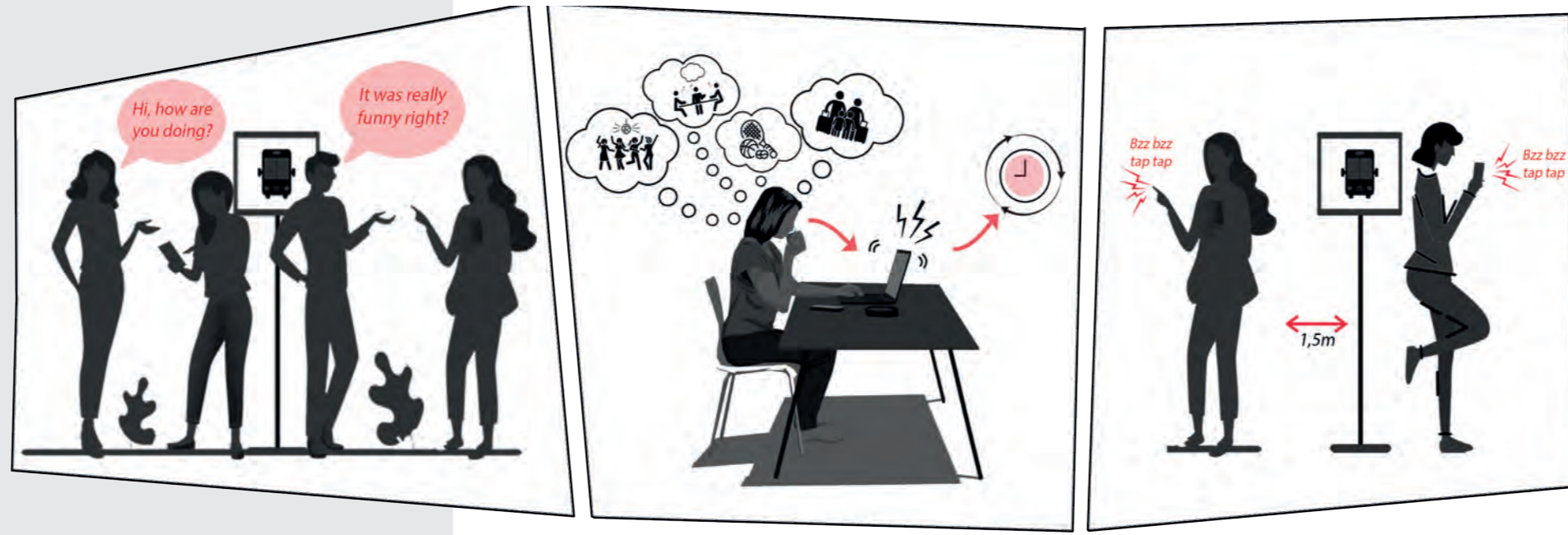
# ECHOSEAT

“CREATES CONVERSATION”

## C O N C E P T

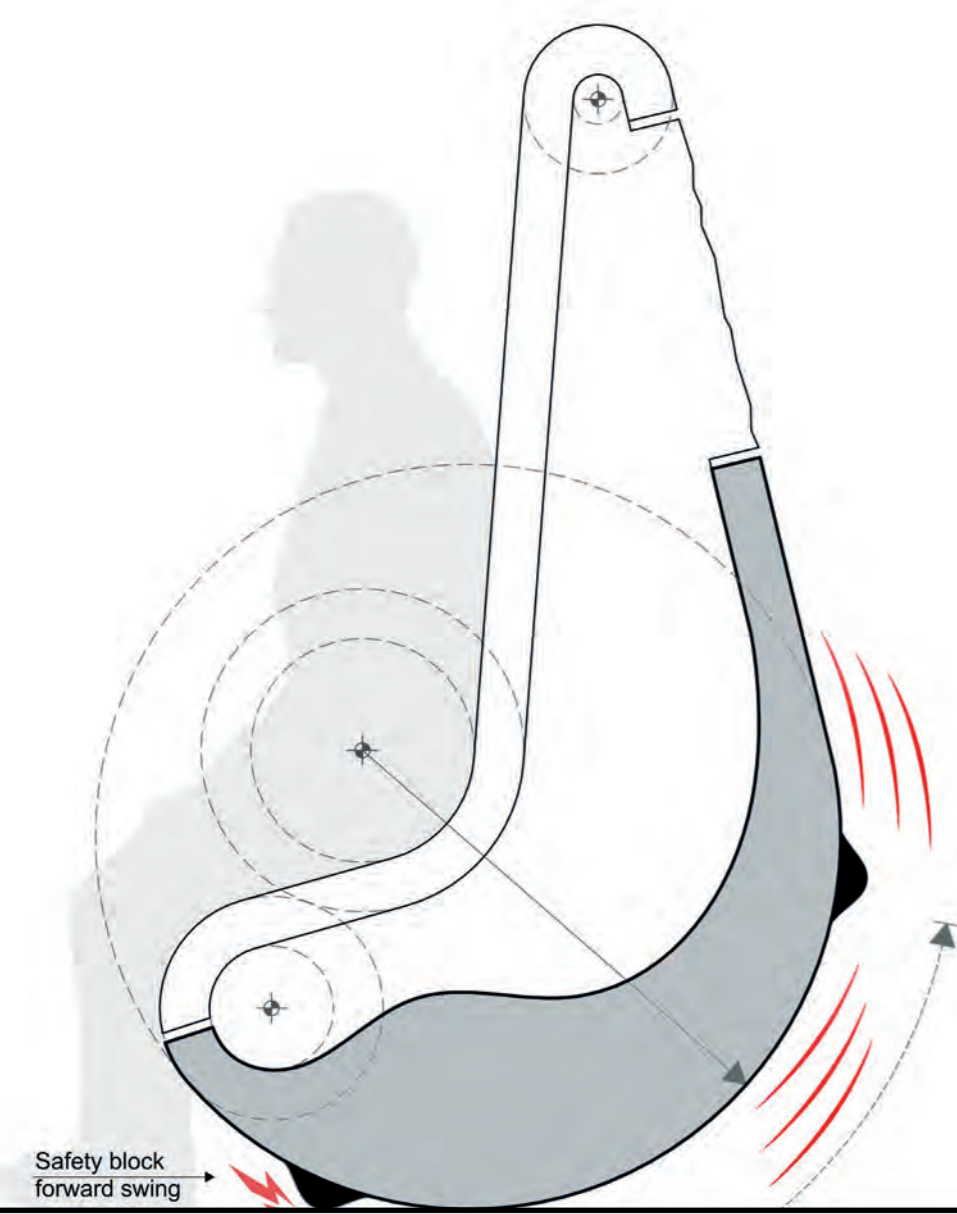
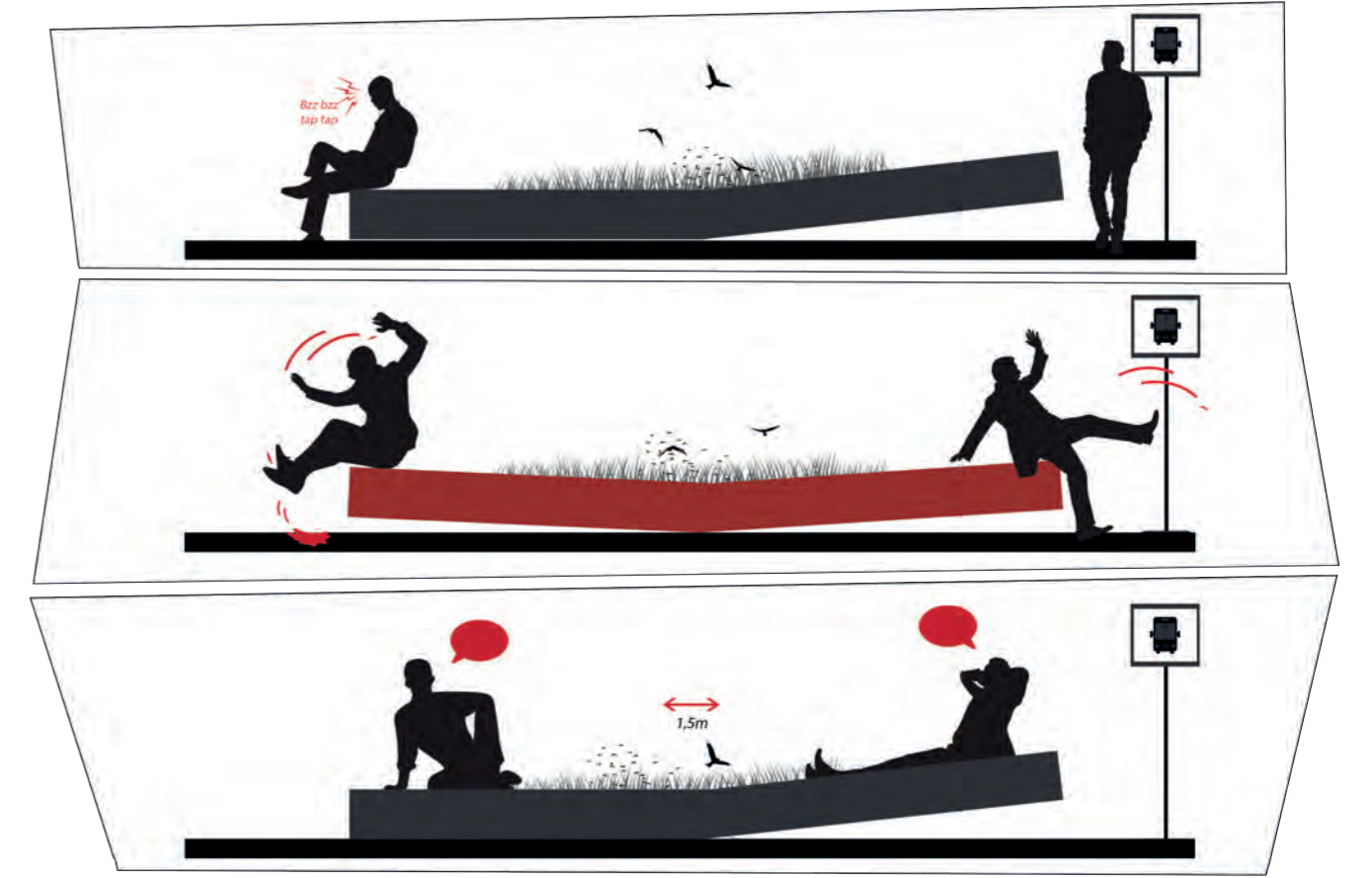
The Echoseat acts like an ordinary bench when you sit at one end, when more people sit down on the other end of the bench, it becomes a task to balance the element.

Nowadays, everyone is occupied with their phones while waiting and not paying attention to surrounding people and nature. The Echoseat is here to make a change. It creates conversation in times we need it the most. This is accomplished by the shape of the bench that stimulates interaction.



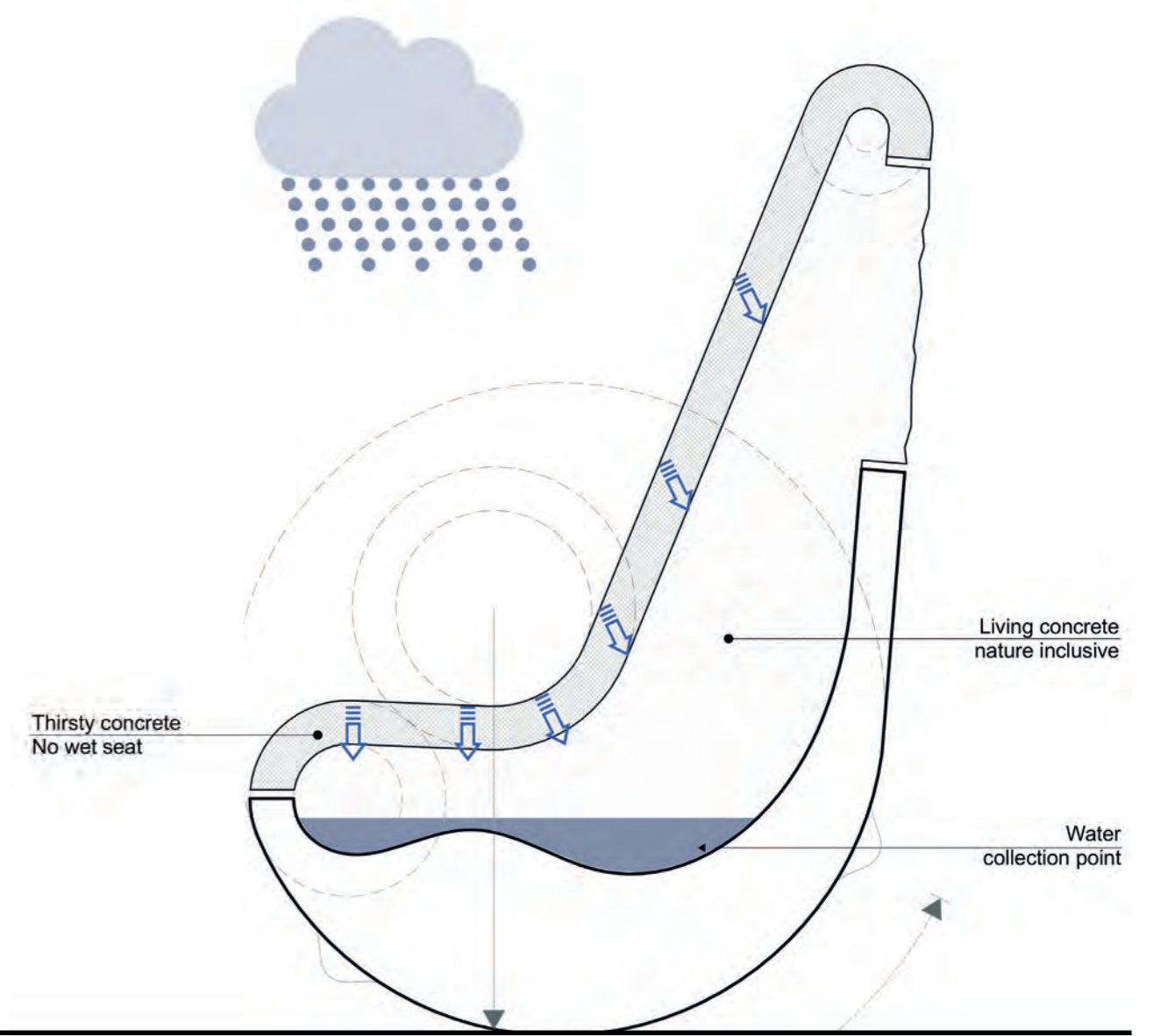
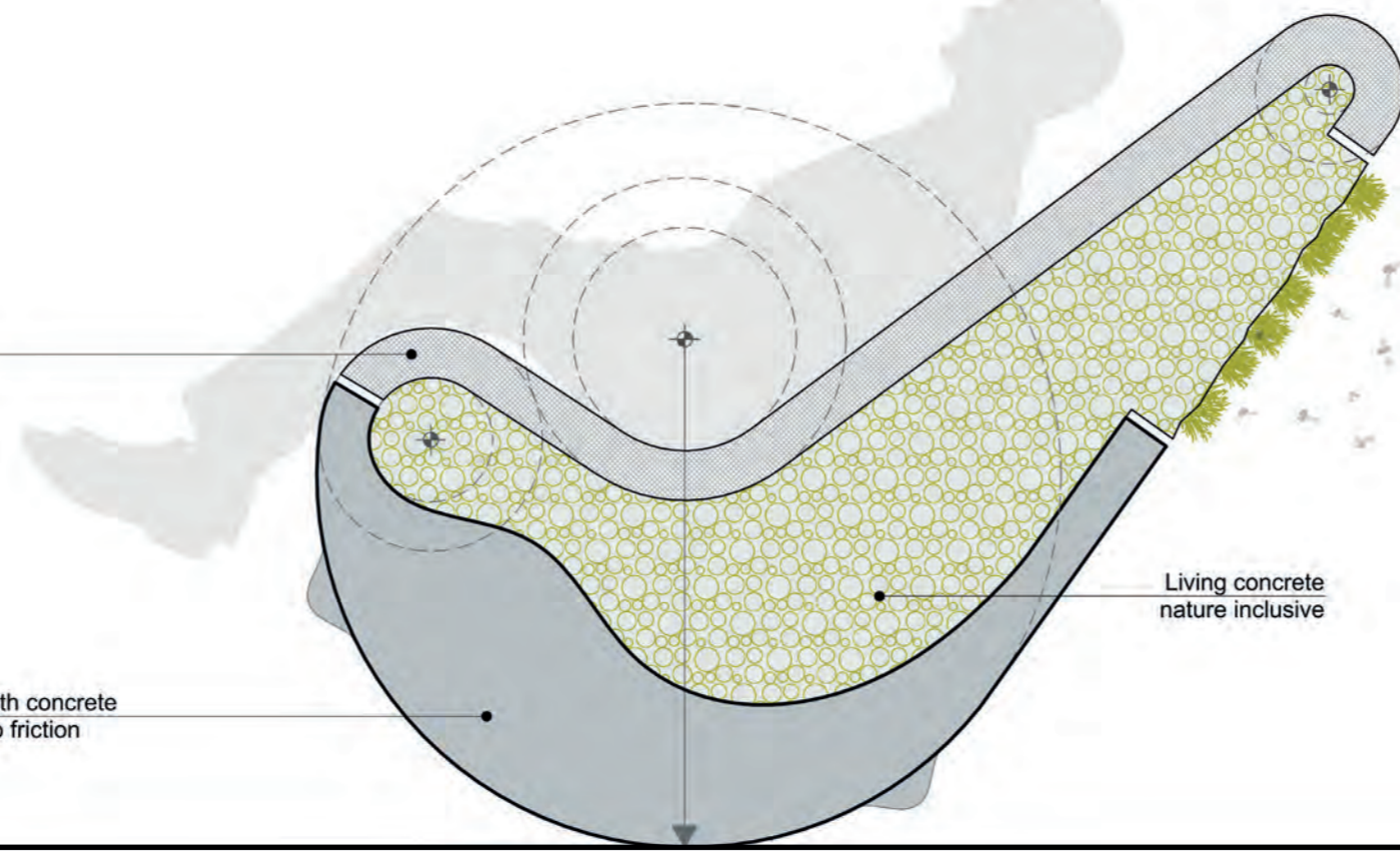
How does it work?

The element consists of two types of concrete, on the top side the so-called thirsty concrete. This form of concrete absorbs water and makes it nature-inclusive while maintaining dry areas as a comfortable sitting surface. The bottom side is made of a high-density concrete, which keeps the whole in perfect balance.



Thirsty concrete  
No wet seat

High strength concrete  
Resistant to friction



### BALANCE

There is continuous communication between all sides surrounding the point of balance. This communication is the starting point of the design. Balance as a metaphor for the actual human interaction stimulated by this piece of outdoor furniture.

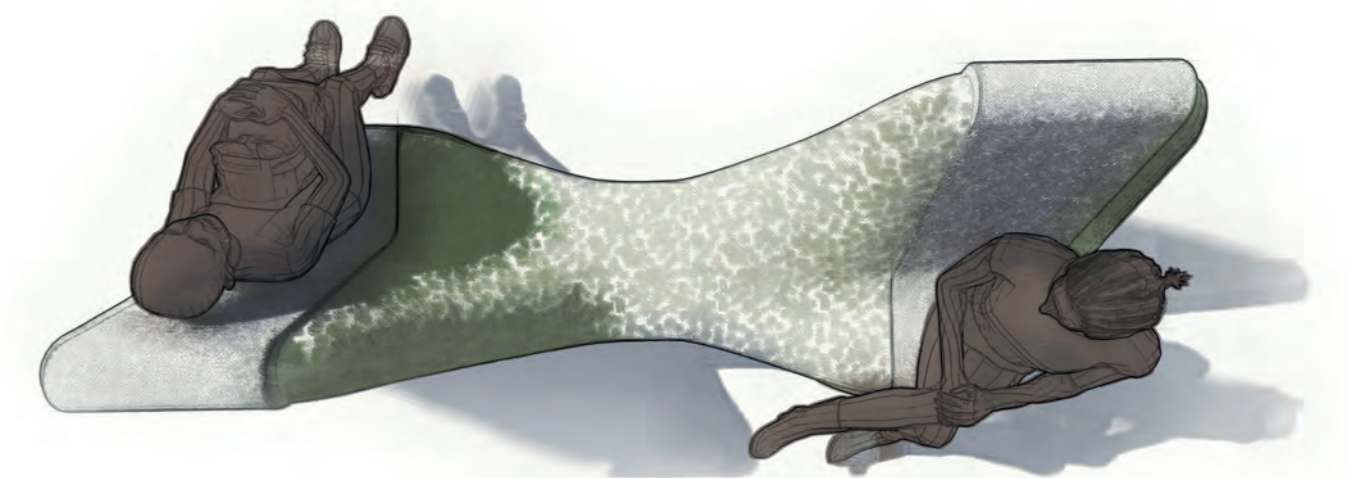
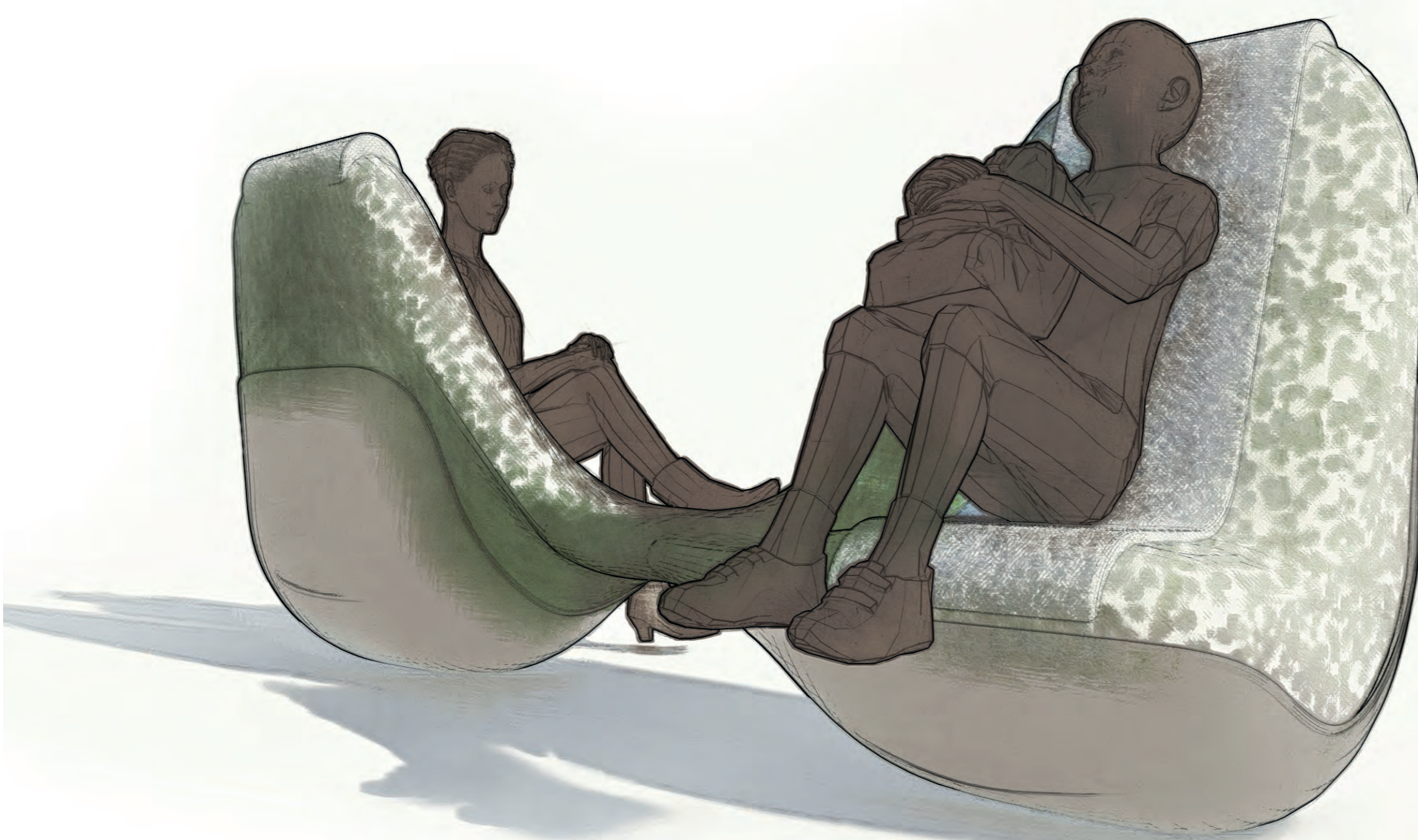
### INCLUSIVE

Nature inclusiveness, is enhanced by this product within the urban environment. By the ingenious water management system, a source of life is created with this piece of furniture. It contributes to both nature and the well-being of humans in the environment.

### SUSTAINABLE

Sustainability in the broadest sense of the word. This design can sustain itself and the environment by the movement that is generated by the people who get seated on the bench. Watering plants and organisms in the environment is accomplished this way.

## D E S I G N E L E M E N T S



## R E S U L T S

Due to the Corona crisis, the demand for outdoor furniture has changed. Outdoor elements have an important role in the quality of life. Our design is intended to stimulate being outdoors in a responsible way by keeping distance and enjoying the surroundings in a sustainable and responsible way for both humans and all other.

We see the Echoseat as a perfect example of both technical and ecological improvement in the way we tend to live at the moment.